

Ledger beam

0,72 m | Hot-dip galvanized



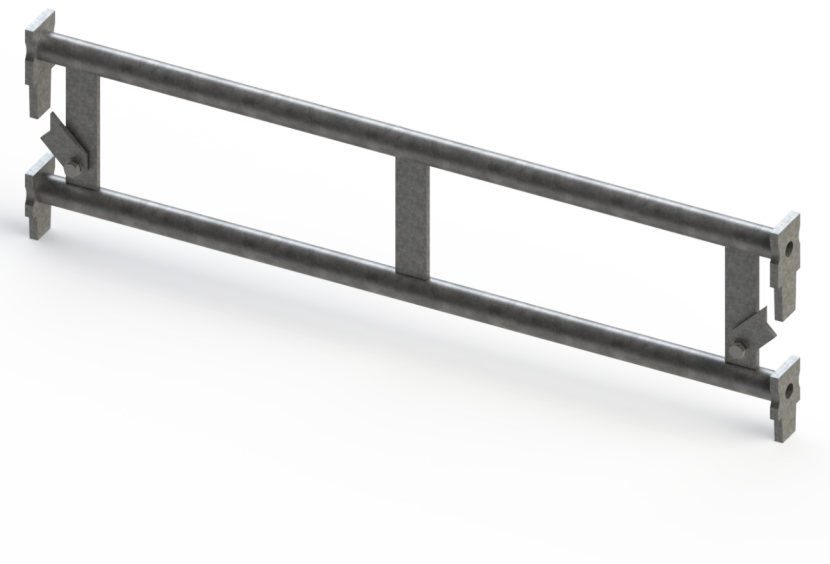
✓ EN12810

PRO

3 YEAR WARRANTY

Specifications

Length: 0.72 m
Width: 1.6 m
Height: 2 m
Weight: 3.7 kg
Colour: Grey
Certification: EN12810
Jumbo Brand: PRO SCAFFOLDS



Product no.	DBNumber	EAN Code	Jumbo Brand	Warranty	Net Weight
26GS1118	1526163		PRO SCAFFOLDS	3 years	3.7 kg

Description

The ledger beam is an essential component of JUMBO Universal Scaffolds, used for horizontal bracing, scaffold extension, and platform laying. It provides stability and flexibility in scaffold construction.

Detail Images

The set consists of

PCS | |

Spareparts



Flat bar lock

26gs10999

Accessories

