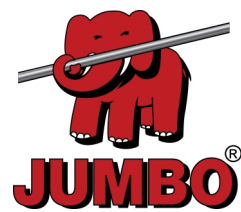


# Ledger beam

0,72 m | Hot-dip galvanized



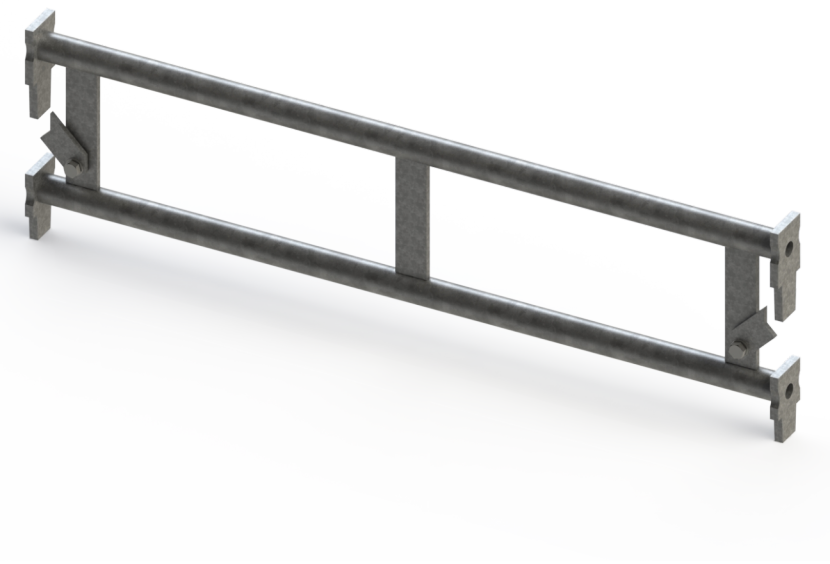
✓ EN12810

PRO

3 YEAR WARRANTY

## Specifications

Length: 0.72 m  
Width: 1.6 m  
Height: 2 m  
Weight: 3.7 kg  
Colour: Grey  
Certification: EN12810  
Jumbo Brand: PRO SCAFFOLDS



Product no.	DBNumber	EAN Code	Jumbo Brand	Warranty	Net Weight
26GS1118	1526163		PRO SCAFFOLDS	3 years	3.7 kg

## Description

The ledger beam is an essential component of JUMBO Universal Scaffolds, used for horizontal bracing, scaffold extension, and platform laying. It provides stability and flexibility in scaffold construction.

# Detail Images

## The set consists of

PCS | |

## Spareparts



Flat bar lock  
26gs10999

## Accessories

