

# Universal Scaffold Pro

Standard | Steel | 10 x 15 M



## Specifications

- Working Height: 12 m
- Standing Height: 10 m
- Scaffolding Class: 5.0
- Length: 15 m
- Weight: 3069.32 kg
- Material: Steel
- Colour: Grey
- Load Capacity: 450 kg/m²
- Certification: EN12810
- Jumbo Brand: PRO SCAFFOLDS

Product no.	DBNumber	EAN Code	Jumbo Brand	Warranty	Net Weight
261015	5036486		PRO SCAFFOLDS	3 years	3069.32 kg

## Description

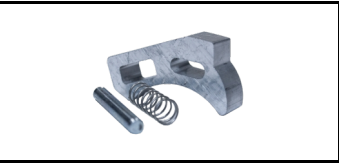
- The JUMBO Universal Scaffold Pro with carpenter setup is designed to meet the demands of professional craftsmen working in challenging environments. The scaffold is made from hot-dip galvanised high-quality steel, providing long-lasting durability and resistance to corrosion.
- The scaffolding is very versatile as it can be classified from scaffolding class 2-5 depending on what type of grating, platform etc. that is in use. A Scaffolding will always be classified depending on the lowest classified component.
- The scaffold is built with the longest possible columns, offering extra height and stability, making it ideal for large construction projects. It features wood/wood standard planks measuring 48x220 cm, providing a secure and stable working surface. The bracket fastenings ensure a strong and reliable connection between scaffold components.
- The JUMBO Universal Scaffold Pro is supplied with one layer of planks, making it ready for use and suitable for a wide range of tasks requiring a robust and dependable scaffold.

# Detail Images

## The set consists of

4 STK	26GS1014	Standard tube	8 STK	26GS1012	Standard tube
36 STK	26GS1011	Standard tube	60 STK	26GS1091	Ledger beam
36 STK	26GS1115	Ledger beam	10 STK	26SKR300	Guardrail single
4 STK	26SKR160	Guardrail single	10 STK	26GS1041	Diagonal brace
30 STK	26ST1100	Wooden grating	12 STK	26ST1003	Base Jacks
6 STK	26ST1120	Toeboard bracket	5 STK	26ST1140	Locking boards
24 STK	26ST1005	Tie rod w/clamp	24 STK	26GS1089	Fixing cramp
24 STK	26GS1090	Ring bolt			

## Spareparts



ALU Locking mechanism  
1600300



Plywood for platforms w/o hatch  
7501780



Hook  
1690050



Storm lock  
1003050231



End piece  
100305023



Screw  
5,5x25 skrue



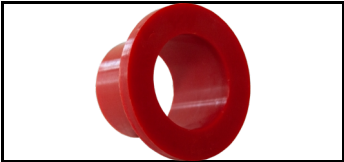
Pop rivet  
Popnitte6,4x22



Pop rivet  
Popnitte6,4x12



Single Coupler  
18SFS216  
5189340



Bushing  
1400210NY



Top plug for screwjack  
1400211NY



ALU Locking mechanism  
1600300

## Accessories



Wooden grating  
26ST1100  
5033762



Beam rider  
26GS1033  
5033765



Composite Platform  
26ST1107  
1586206



Stairway  
26GS1111  
5033770



Standard tube  
26GS1011  
5033745



Ledger beam - light  
26GS1091-L  
1991012



Diagonal brace  
26GS1041  
5033753



Guardrail double  
26SKRV300  
1526172