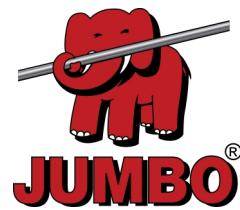


# Super Pro Step ladder

10 Steps



✓ EN131

SUPER PRO

3 YEAR WARRANTY



## Specifications

Standing Height: 1.95 m  
Load Capacity: 150 kg  
Platform Height: 2.45 m  
Platform: 0,4x0,22 m  
Width: 71 cm  
Steps: 10  
Weight: 21 kg  
Step depth: 10 cm  
Material: Aluminium,Plastic  
Colour: Grey,Red  
Transport Length: 2.71 m  
Certification: EN131  
Jumbo Brand: SUPER PRO LADDERS

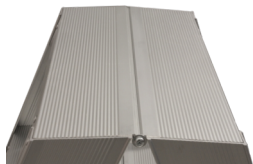
Product no.	DBNumber	EAN Code	Jumbo Brand	Warranty	Net Weight
41TSS210	1382568	5708375000636	SUPER PRO LADDERS	3 years	21 kg

## Description

The JUMBO Super Pro Step Ladder - double is a sturdy and reliable ladder designed for professional craftsmen who demand the best from their equipment. The ladder features heavy-duty rails with an anodised surface, ensuring that you avoid dirty hands while working. The 12-point connections and reinforced corners on all steps contribute to the ladder's robustness and long-lasting durability.

With 10 cm wide steps, this ladder ensures a comfortable and secure standing position. The platform, measuring 22 x 40 cm, adds additional strength and stability to the ladder's structure. This ladder is ideal for professionals who need a reliable and heavy-duty step ladder for daily use, where both safety and durability are essential.

# Detail Images



Plan platform



12 point joints and heavy corner reinforcements on all steps

# The set consists of

STK | |

# Spareparts



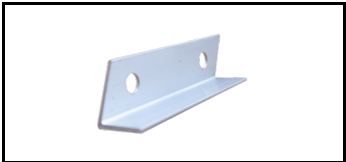
Rubber foot  
41TSS900



Nut and bolt  
41TSS901



ALU bracket  
41TSS903



ALU bracket  
41TSS904



Wedge  
41TSS905



Locking plate  
41TSS914



Intermediate pipe  
41TSS916



Top plate  
41TSS919



Red ribbon  
41TSS927

# Accessories

