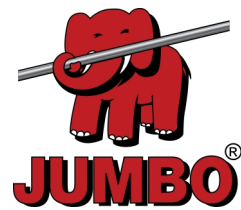
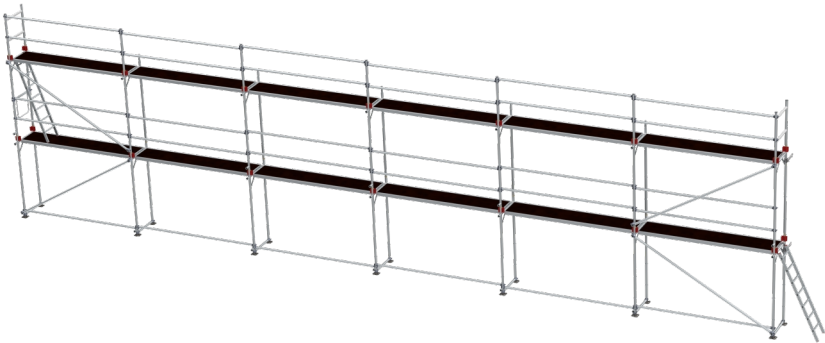


# Pro Facade Scaffolds Superflex

Aluminium | 4 x 18 m



## Specifications



- Working Height: 6 m
- Standing Height: 4 m
- Scaffolding Class: 3.0
- Length: 18 m
- Weight: 610.18 kg
- Material: Aluminium
- Colour: Grey
- Certification: EN12810
- Jumbo Brand: PRO SCAFFOLDS

Product no.	DBNumber	EAN Code	Jumbo Brand	Warranty	Net Weight
214018s	1270984		PRO SCAFFOLDS	10 years	610.18 kg

## Description

The Pro Facade Scaffolds Superflex is designed to meet the needs of professional craftsmen who require both strength and flexibility in their scaffolding system. The scaffold features strong and lightweight frames made from aluminum alloy 6005 T6, providing an optimal combination of high strength and low weight.

The frames are constructed with Ø50x4mm tubes and are fully welded, ensuring a stable and secure structure. This construction makes the scaffold ideal for demanding tasks where reliability is crucial.

Diagonals and handrails are equipped with impact-resistant, fully welded claws, further enhancing the durability and safety of the scaffold. This makes the Superflex system particularly suitable for both small and large construction projects.

The system is extremely flexible and offers many customization options, making it easy to adjust the scaffold to different needs on the job site. Additionally, it is quick and easy to assemble and disassemble, saving time and increasing efficiency.

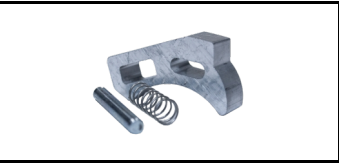
The scaffold is supplied with JUMBO Scaffolding Platforms, which combine aluminum and waterproof plywood, ensuring a safe

# Detail Images

## The set consists of

14 STK	12079200s	Frame 2 m	7 STK	1100691	Horizontal brace
2 STK	12074101s	Guardrail frame 1 m	30 STK	1103050	Horizontal brace / diagonal
4 STK	1103510	Diagonals	11 STK	1003050	Platform w/o hatch
1 STK	1003051	Platform w/hatch	2 STK	1550212	Scaffold Ladders
14 STK	26ST1003	Base Jacks	1 STK	1540000	End piece
5 STK	1540100s	Handrail post	23 STK	1600100	Safety clips
18 STK	FLB-1	Toeboard clip	9 STK	26ST1005	Tie rod w/clamp
9 STK	1590010	Rawplugs	9 STK	1591010	Eye Screws

## Spareparts



ALU Locking mechanism  
1600300



Plywood for platforms w/o hatch  
7501780



Hook  
1690050



Storm lock  
1003050231



End piece  
100305023



Screw  
5,5x25 skrue



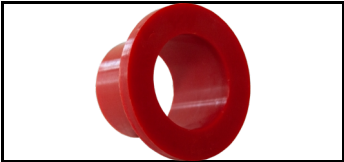
Pop rivet  
Popnitte6,4x22



Pop rivet  
Popnitte6,4x12



Single Coupler  
18SFS216  
5189340



Bushing  
1400210NY



Top plug for screwjack  
1400211NY



ALU Locking mechanism  
1600300

## Accessories



Frame 2 m  
12079200s  
1252848



Frame 1 m  
12079100s  
1252849



Frame 75 cm  
12079075s  
1252850



Frame 50 cm  
12079050s  
1252851



Wide bottom frame  
12135225  
5189254



Bracket  
1520060  
5929687



Bracket  
1520060hs  
1252857



Scaffold Ladders  
1550212  
5929691