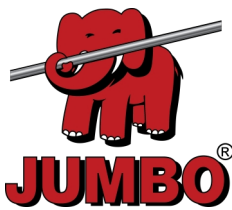


Universal Scaffold Pro

Standard | Stål | 4 x 24 M



Specifications

- Working Height: 6 m
- Standing Height: 4 m
- Scaffolding Class: 5.0
- Length: 9 m
- Weight: 1179.32 kg
- Material: Steel
- Colour: Grey
- Load Capacity: 450 kg/m²
- Certification: EN12810
- Jumbo Brand: PRO SCAFFOLDS

Product no.	DBNumber	EAN Code	Jumbo Brand	Warranty	Net Weight
264009	5036468		PRO SCAFFOLDS	3 years	1179.32 kg

Description

- The JUMBO Universal Scaffold Pro with carpenter setup is designed to meet the demands of professional craftsmen working in challenging environments. The scaffold is made from hot-dip galvanised high-quality steel, providing long-lasting durability and resistance to corrosion.
- The scaffolding is very versatile as it can be classified from scaffolding class 2-5 depending on what type of grating, platform etc. that is in use. A Scaffolding will always be classified depending on the lowest classified component.
- The scaffold is built with the longest possible columns, offering extra height and stability, making it ideal for large construction projects. It features wood/wood standard planks measuring 48x220 cm, providing a secure and stable working surface. The bracket fastenings ensure a strong and reliable connection between scaffold components.
- The JUMBO Universal Scaffold Pro is supplied with one layer of planks, making it ready for use and suitable for a wide range of tasks requiring a robust and dependable scaffold.

Detail Images

The set consists of

2 STK	26GS1014	Standard tube	6 STK	26GS1012	Standard tube
8 STK	26GS1011	Standard tube	18 STK	26GS1091	Ledger beam
12 STK	26GS1115	Ledger beam	6 STK	26SKR300	Guardrail single
4 STK	26SKR160	Guardrail single	2 STK	26GS1041	Diagonal brace
18 STK	26ST1100	Wooden grating	8 STK	26ST1003	Base Jacks
4 STK	26ST1120	Toeboard bracket	3 STK	26ST1140	Locking boards
4 STK	26ST1005	Tie rod w/clamp	4 STK	26GS1089	Fixing cramp
4 STK	26GS1090	Ring bolt	1 STK	Mont-Murstillads	Assembly instructions Masonry scaffolding

Spareparts



ALU Locking mechanism
1600300



Plywood for platforms w/o hatch
7501780



Hook
1690050



Storm lock
1003050231



End piece
100305023



Screw
5,5x25 skrue



Pop rivet
Popnitte6,4x22



Pop rivet
Popnitte6,4x12



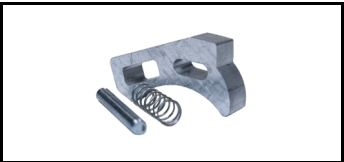
Single Coupler
18SFS216
5189340



Bushing
1400210NY

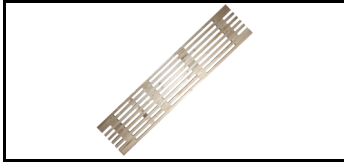


Top plug for screwjack
1400211NY



ALU Locking mechanism
1600300

Accessories



Wooden grating
26ST1100
5033762



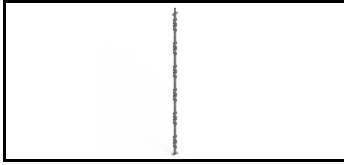
Beam rider
26GS1033
5033765



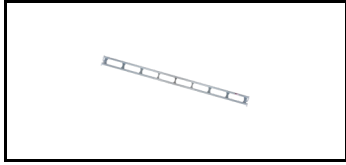
Composite Platform
26ST1107
1586206



Stairway
26GS1111
5033770



Standard tube
26GS1011
5033745



Ledger beam - light
26GS1091-L
1991012



Diagonal brace
26GS1041
5033753



Guardrail double
26SKRV300
1526172