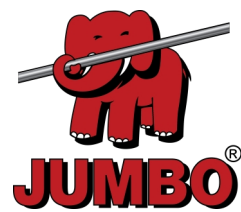


Ledger beam

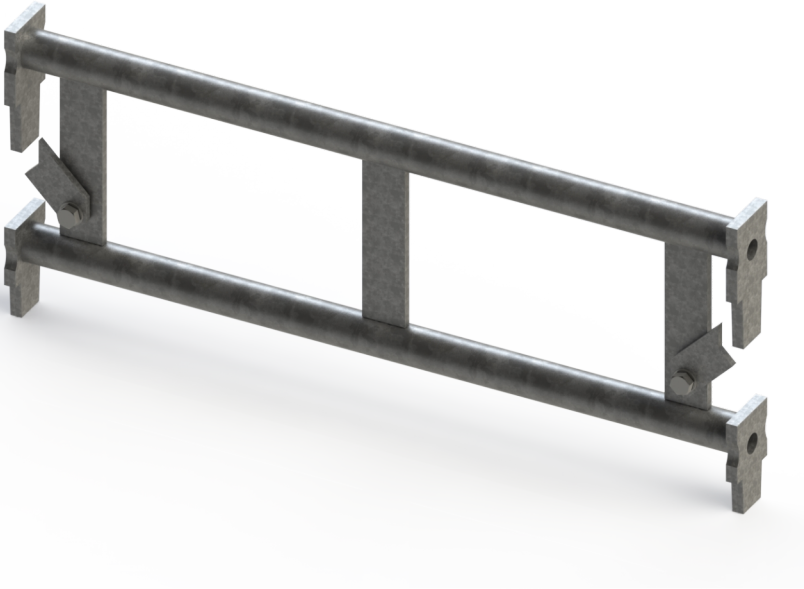
0,50 m | Hot-dip galvanized



EN12810

PRO

3 YEAR WARRANTY



Specifications

Length: 0.5 m
Weight: 2.9 kg
Colour: Grey
Certification: EN12810
Jumbo Brand: PRO SCAFFOLDS

Product no.	DBNumber	EAN Code	Jumbo Brand	Warranty	Net Weight
26GS1119	5033752		PRO SCAFFOLDS	3 years	2.9 kg

Description

The ledger beam is an essential component of JUMBO Universal Scaffolds, used for horizontal bracing, scaffold extension, and platform laying. It provides stability and flexibility in scaffold construction.

Detail Images

The set consists of

STK | |

Spareparts



Flat bar lock
26gs10999

Accessories

