

Ledger beam - light

3,00 m | Hot-dip galvanized



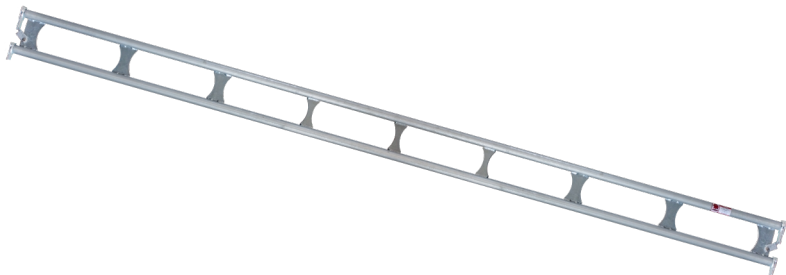
✓ EN12810

PRO

3 YEAR WARRANTY

Specifications

Length: 3 m
Weight: 14.8 kg
Colour: Grey
Certification: EN12810
Jumbo Brand: PRO SCAFFOLDS



Product no.	DBNumber	EAN Code	Jumbo Brand	Warranty	Net Weight
26GS1091-L	1991012		PRO SCAFFOLDS	3 years	14.8 kg

Description

The ledger beam is a key part of the JUMBO Universal Scaffolding, used to create stable platforms. It provides the necessary strength and stability for the scaffold and easily integrates with other components.

Detail Images

The set consists of

STK | |

Spareparts



Flat bar lock

26gs10999

Accessories

