

# Super Pro Dual Extension Ladder

2 x 13 Steps | 6,9 m



✓ EN131

SUPER PRO

3 YEAR WARRANTY

## Specifications

- Length: 6.9 m
- Transport Length: 3.8 m
- Transport Width: 0.515 m
- Steps: 2 x 13
- Weight: 17.2 kg
- Width: 51.5 cm
- Colour: Grey
- Load Capacity: 150 kg
- Certification: EN131
- Jumbo Brand: SUPER PRO LADDERS

Product no.	DBNumber	EAN Code	Jumbo Brand	Warranty	Net Weight
41JSS213	1845802	5708375221765	SUPER PRO LADDERS	3 years	17.2 kg

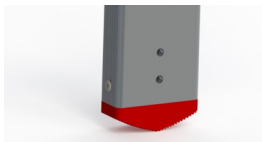
## Description

JUMBO Super Pro Dual Extension Ladder is an extra powerful ladder in craftsman quality. The ladder is made of 6005-T6 aluminium - sturdy & durable ladder, while keeping weight. The ladder has 38 mm ergonomic, angled & non-skid steps, for a plane and safe standing ground. Sidepieces and steps in anodized aluminum - no dirty fingers! Durable top wheel & nylon fittings in aluminium mounts secure fast & easy extension For extra safety, a Self-locking mechanism crafted from aluminium.

Base Stabilizer with solid feet in non-slip, durable material can be purchased - for extra safety and stability.

NOTE: To meet the requirements of the configuration of leaning ladders according to EN131-Proffesional, extension ladders including a base stabilizer should be chosen from a ladder length of 3 meters

# Detail Images



Anodized aluminium steps and sidepieces - no dirty fingers!



38mm ergonomic, angled & non-skid steps, for a plane and safe standing ground



Durable top wheel & nylon fittings in aluminium mounts secure fast & easy extension



## The set consists of

STK | |

## Spareparts



Bolt w/plastic  
41JSS921



Rubber foot  
41JSS900



Bottom bracket  
41JSS905



Pop rivet  
41JSS904



Step lock set  
41JSS906



Top clips set  
41JSS907



Wall Wheel  
41JSS909



Bolt set  
41JSS909B

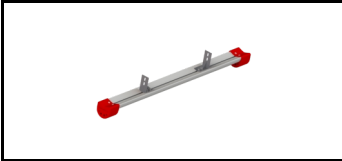


Top plug  
41JSS912



Inner lining  
41JSS922

## Accessories



Super Pro Base Stabilizer  
41JSF125  
1838491