

# Universal Scaffold Pro

Ergo | Steel | 4 x 6 M



## Specifications

- Working Height: 6 m
- Standing Height: 4 m
- Scaffolding Class: 5.0
- Length: 6 m
- Weight: 902.18 kg
- Material: Steel
- Colour: Grey
- Load Capacity: 450 kg/m²
- Certification: EN12810
- Jumbo Brand: PRO SCAFFOLDS

Product no.	DBNumber	EAN Code	Jumbo Brand	Warranty	Net Weight
264006-M	1535257		PRO SCAFFOLDS	3 years	902.18 kg

## Description

The JUMBO Universal Scaffold Pro with carpenter setup is designed to meet the high standards that professional craftsmen demand from their equipment. The scaffold is made of hot-dip galvanised high-quality steel, ensuring durability and robustness in demanding work environments.

The scaffolding is very versatile as it can be classified from scaffolding class 2-5 depending on what type of grating, platform etc. that is in use. A Scaffolding will always be classified depending on the lowest classified component.

The scaffold is constructed with 1 m internal columns, providing additional support and stability. It features wood/plastic ergonomic planks measuring 36.5x220 cm, offering a secure and comfortable working surface. For added strength, an extra row of beams is included, and the setup is secured with aluminium pipe fastenings.

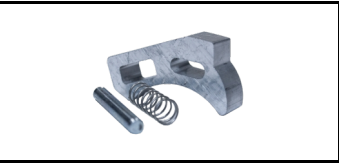
The JUMBO Universal Scaffold Pro is supplied with one layer of planks, making it ready for use in a wide range of construction projects where safety and ergonomics are paramount.

# Detail Images

## The set consists of

14 STK	26GS1014	Standard tube	3 STK	26GS1012	Standard tube
3 STK	26GS1011	Standard tube	16 STK	26GS1091	Ledger beam
12 STK	26GS1115	Ledger beam	4 STK	26SKR300	Guardrail single
4 STK	26SKR160	Guardrail single	2 STK	26GS1042	Diagonal brace
2 STK	26GS1041	Diagonal brace	16 STK	26ST1105	Wooden grating
6 STK	26ST1003	Base Jacks	3 STK	26ST1120	Toeboard bracket
2 STK	26ST1140	Locking boards	6 STK	1515060Alu	Tie rod tube
6 STK	18SFF105	Double coupler	6 STK	26GS1089	Fixing cramp
6 STK	26GS1090	Ring bolt			

## Spareparts



ALU Locking mechanism  
1600300



Plywood for platforms w/o hatch  
7501780



Hook  
1690050



Storm lock  
1003050231



End piece  
100305023



Screw  
5,5x25 skrue



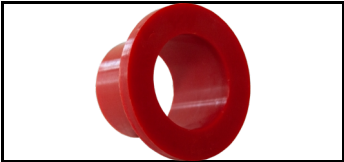
Pop rivet  
Popnitte6,4x22



Pop rivet  
Popnitte6,4x12



Single Coupler  
18SFS216  
5189340



Bushing  
1400210NY



Top plug for screwjack  
1400211NY



ALU Locking mechanism  
1600300

## Accessories



Wooden grating  
26ST1100  
5033762



Beam rider  
26GS1033  
5033765



Composite Platform  
26ST1107  
1586206



Stairway  
26GS1111  
5033770



Standard tube  
26GS1011  
5033745



Ledger beam - light  
26GS1091-L  
1991012



Diagonal brace  
26GS1041  
5033753



Guardrail double  
26SKRV300  
1526172