

# Aluminium Girders

3,1 m

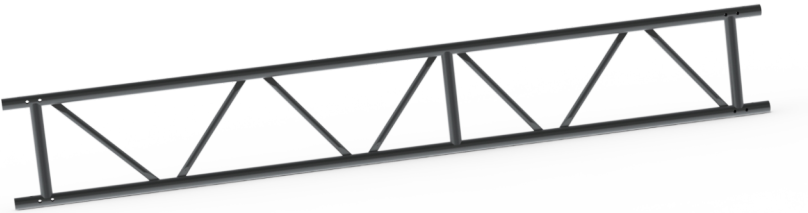


PRO

1 YEAR WARRANTY

## Specifications

Length: 3.1 m  
Weight: 12.4 kg  
Colour: Grey  
Jumbo Brand: PRO SCAFFOLDS



Product no.	DBNumber	EAN Code	Jumbo Brand	Warranty	Net Weight
19300	1607289		PRO SCAFFOLDS	1 years	12.4 kg

## Description

JUMBO Girders used as a support beam with fastening at both ends (Coupler).

Aluminium girders are a versatile component that can be used for a wide range of purposes, including assemblies, coverings, and special scaffolding setups. This girder is designed to function as a strong and reliable support beam, securely fastened at both ends with couplers. Made from durable aluminium, the JUMBO Girder combines lightweight properties with high strength, making it ideal for demanding construction projects. Whether you need a solution for temporary structures or more permanent setups, this girder delivers reliable performance and flexibility.



# Detail Images

The set consists of

STK | |

## Spareparts



## Accessories

