

Super Pro Dual Extension Ladder

2 x 17 Steps | 8,8 m



✓ EN131

SUPER PRO

3 YEAR WARRANTY



Specifications

- Length: 8.8 m
- Transport Length: 4.9 m
- Transport Width: 0.515 m
- Steps: 2 x 17
- Weight: 26.4 kg
- Width: 51.5 cm
- Colour: Grey
- Load Capacity: 150 kg
- Certification: EN131
- Jumbo Brand: SUPER PRO LADDERS

Product no.	DBNumber	EAN Code	Jumbo Brand	Warranty	Net Weight
41JSS217	1845808	5708375221789	SUPER PRO LADDERS	3 years	26.4 kg

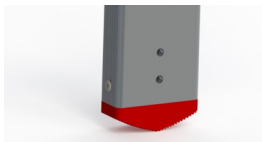
Description

JUMBO Super Pro Dual Extension Ladder is an extra powerful ladder in craftsman quality. The ladder is made of 6005-T6 aluminium - sturdy & durable ladder, while keeping weight. The ladder has 38 mm ergonomic, angled & non-skid steps, for a plane and safe standing ground. Sidepieces and steps in anodized aluminum - no dirty fingers! Durable top wheel & nylon fittings in aluminium mounts secure fast & easy extension For extra safety, a Self-locking mechanism crafted from aluminium.

Base Stabilizer with solid feet in non-slip, durable material can be purchased - for extra safety and stability.

NOTE: To meet the requirements of the configuration of leaning ladders according to EN131-Proffesional, extension ladders including a base stabilizer should be chosen from a ladder length of 3 meters

Detail Images



Anodized aluminium steps and sidepieces - no dirty fingers!



38mm ergonomic, angled & non-skid steps, for a plane and safe standing ground

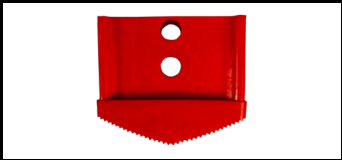


Durable top wheel & nylon fittings in aluminium mounts secure fast & easy extension

The set consists of

STK | |

Spareparts



Rubber foot
41JSS901



Bottom bracket
41JSS905



Pop rivet
41JSS904



Step lock set
41JSS906S



Top clips set
41JSS908



Wall Wheel
41JSS909



Bolt set
41JSS909B



Top plug
41JSS913

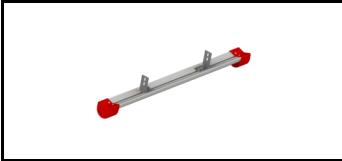


Bolt w/plastic
41JSS921



Inner lining
41JSS922

Accessories



Super Pro Base Stabilizer
41JSF125
1838491