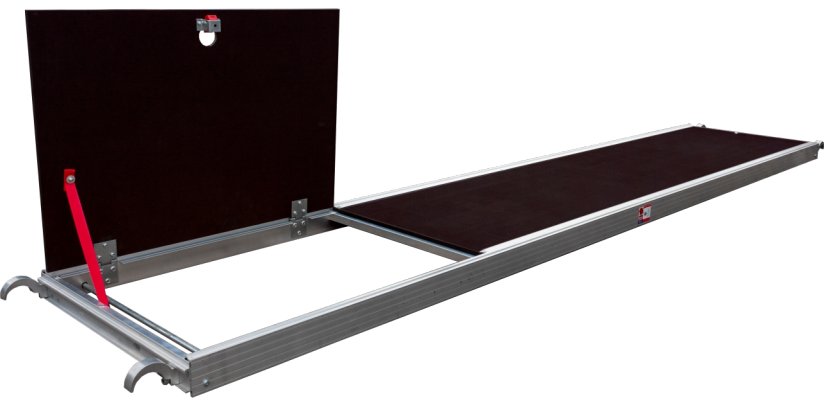


Platform w/hatch

60 x 305 cm



Specifications



Scaffolding Class: 3.0
Length: 3.05 m
Transport Length: 3.11 m
Transport Height: 0.09 m
Transport Width: 0.6 m
Weight: 20.5 kg
Width: 60 cm
Material: Aluminium,Veneer
Colour: Brown
Hatch: Yes
Load Capacity: 200 kg
Jumbo Brand: PRO SCAFFOLDS

| Product no. | DBNumber | EAN Code | Jumbo Brand | Warranty | Net Weight |
|-------------|----------|----------|---------------|----------|------------|
| 1003051 | 7782899 | | PRO SCAFFOLDS | 10 years | 20.5 kg |

Description

The JUMBO platform (aluminium / plywood) with hatch is designed to meet the needs for safety and functionality on scaffolding. The platform is made from waterproof and non-slip Finnish plywood in pure birch, ensuring durability and a secure working area. It is mounted in sturdy aluminium rails, providing additional stability and long-lasting performance.

The offset hooks on the platform allow for scaffold extension without causing misalignment, ensuring a smooth and secure working surface even when the scaffold is extended. A patented storm lock is fitted on the underside of the platform, making it easy to secure the platform to all types of scaffolding, further enhancing safety during use.

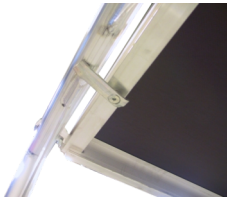
Detail Images



Waterproof, non-slip, platform in Finnish plywood. Pure birch wood, mounted in strong aluminum profiles



Non-slip platforms equipped with staggered hooks, which makes lengthwise extension without displacement possible



Placed at each end under the platform, the patented storm locks are used to secure the platform to the scaffold

The set consists of

STK | |

Spareparts



Plywood for platforms with hatch
7503051



Hook
1690050



Storm lock
1003050231



End piece
100305023



Strap
1003050233



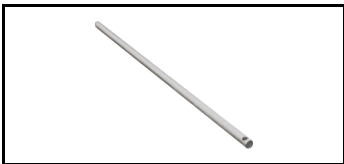
Pop rivet
Popnitte6,4x18



Strap
1003050233



Pop rivet
Popnitte6,4x18



Crossbar
1003050587



Screw
5,5x25 skrue



Pop rivet
Popnitte6,4x22



Pop rivet
Popnitte6,4x12



Lock
lås-lem



Hinge
10030502

Accessories

